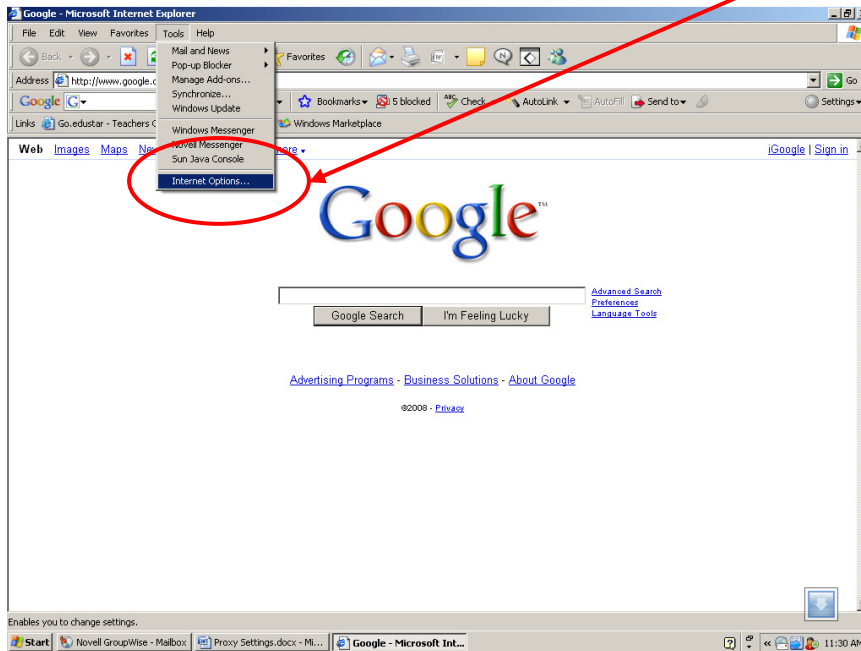


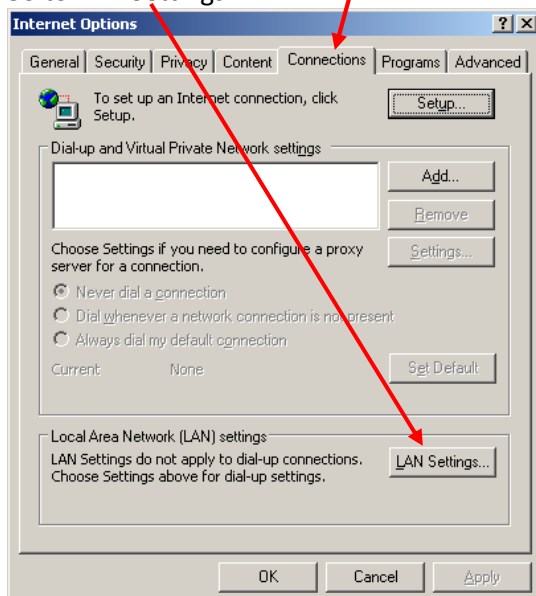
Proxy Settings Internet Explorer

From time to time, you might have to change the proxy settings we use here at USD411. This will happen if you leave the district and go to a meeting. The proxy settings on your computer are only for USD411 use. So, here is how to change the proxy settings in Internet Explorer

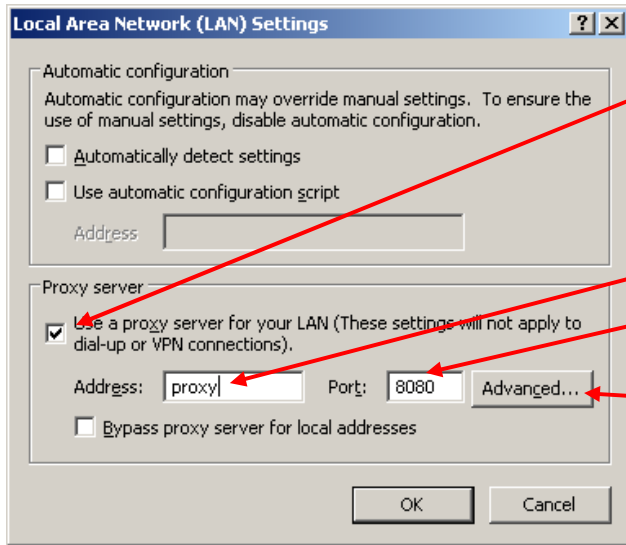
Bring up Internet Explorer and go to Tools. Then select Internet Options.



This box appears. Got to Connections
Go to LAN Settings



Another box appears and this is where we can make changes.

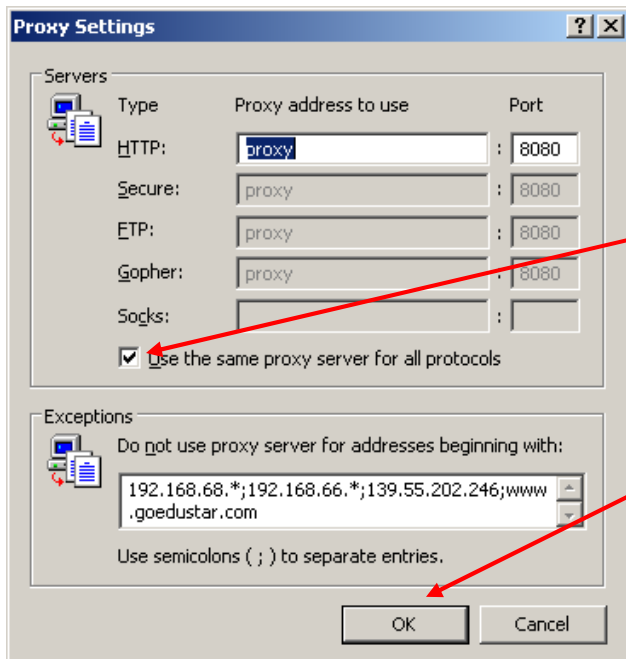


You can turn on or off the proxy by checking or not checking this box. Uncheck the box when you are a home or at a meeting

If you select the box, then you must have "proxy" and 8080 here.

If you have proxy on, click on Advanced...

Now this box appears.



This box is very important to be checked. By checking this box you will be able to use other protocols. This is very important for Go Edu. This box will allow you on secure sites.

Select OK when you are done. Remember to also select OK on the previous boxes as well.

Wireless Connection

When connecting to a wireless connection, the computer you are using will determine what it can receive or hear. There are not settings to change in the wireless connection area. The computer will find a wireless access point for you. But, you must manually connect to the wireless access point. Use the ICONS in the lower right hand tray. The ICONS will differ between models so make sure you know what you are looking for before going to your meeting. The host of your meeting may say the wireless connection is open and there is no password or username. But, they might have the connection secure and they should tell you what the password and username to use during the meeting.